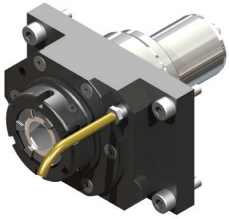


Live Tooling for Mazak Quick Turn Smart 200M/250M

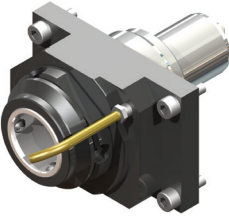
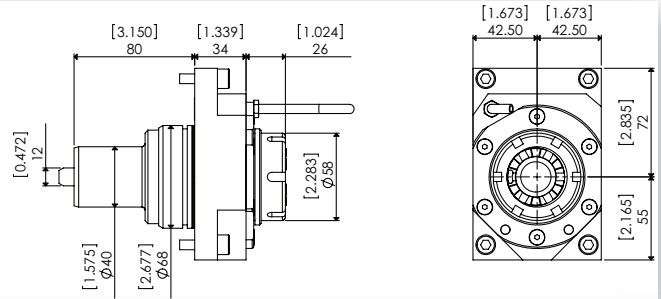


ER32 STRAIGHT TYPE

1000 PSI Coolant Thru Capable
High Torque of 80 Nm/ 6500 RPM Max

> External Coolant
Lyndex-Nikken Part Number: MZST68-ER32X
Mazak ref.: 5B078000802

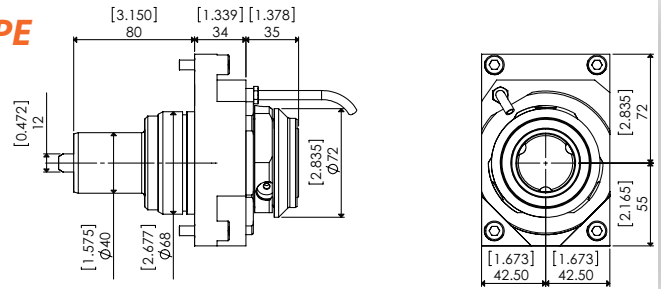
> Internal Coolant
Lyndex-Nikken Part Number: MZST68-ER32X-C
Mazak ref.: 5B078000702



MI50 QUICK CHANGE STRAIGHT TYPE

1000 PSI Coolant Thru Capable
High Torque of 80 Nm/ 6500 RPM Max

Lyndex-Nikken Part Number: MZST68-MI50X
Mazak ref.: -
> See back for MI attachments details

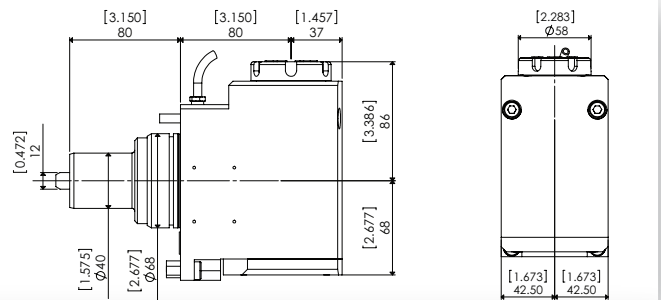


ER32 90 DEGREE TYPE

1000 PSI Coolant Thru Capable
High Torque of 70 Nm/ 6500 RPM Max

> External Coolant
Lyndex-Nikken Part Number: MZST68-ER32Z
Mazak ref.: 5B078000603

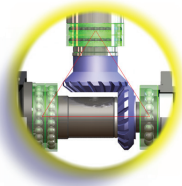
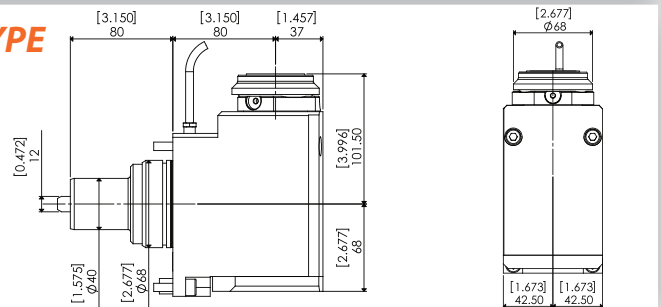
> Internal Coolant
Lyndex-Nikken Part Number: MZST68-ER32Z-C
Mazak ref.: 5B078000503



MI50 QUICK CHANGE 90 DEGREE TYPE

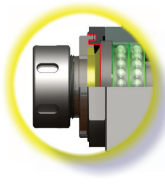
1000 PSI Coolant Thru Capable
High Torque of 70 Nm/ 6500 RPM Max

Lyndex-Nikken Part Number: MZST68-MI50Z
Mazak ref.: -
> See back for MI attachments details



Gears for Stability

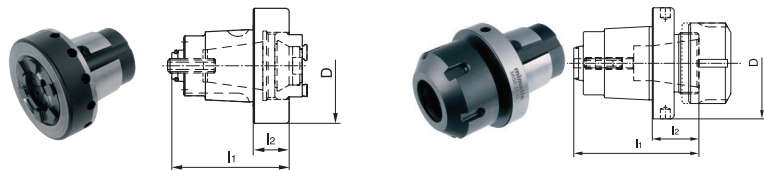
- Hand matched gears to minimize backlash
- Custom Ground Spiral Bevel Gears to maximize torque output
- Placement of ABEC 7 bearings based on FEA analysis balances stress output evenly throughout assembly.



Protective Sealing System

- Labyrinth Seal provides a high pressure multi-barrier construction that prevents contaminants and coolant from entering the main chamber.

- Universal Tool Clamping iSystem
- Reduce Machine Downtimes
- Presetting of The Tools Off-Line
- Tool Change Within Seconds
- Interface Concentricity < 0.002mm

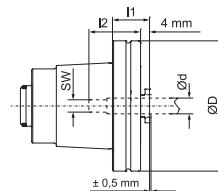


Collet Chuck DIN 6499 - ER Type Short Style, Clamping Nut Inside

Part Number	Collet	l1	l2	D
155418	ER25	2.165"	0.551"	2.283"
155460	ER32	2.323"	0.709"	2.283"

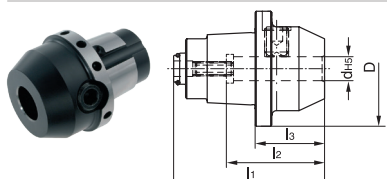
Collet Chuck DIN 6499 - ER Type Long Style, Clamping Nut Outside

Part Number	Collet	l1	l2	D
155448	ER25	2.571"	1.614"	2.283"
155445	ER32	2.835"	1.850"	2.283"



SYNTAX Tapping Quick Change Holder - No Internal Coolant

Part Number	l1	l2	d	D	SW
155450	0.650"	0.984"	3.5mm (0.138")	2.283"	0.106"
155487	0.650"	0.984"	4.5mm (0.177")	2.283"	0.134"
155422	0.650"	1.063"	6mm (0.236")	2.283"	0.193"
155455	0.650"	1.063"	8mm (0.315")	2.283"	0.244"
155423	0.650"	1.102"	9mm (0.354")	2.283"	0.276"
155466	0.650"	1.142"	10mm (0.394")	2.283"	0.315"
155449	0.650"	1.181"	12mm (0.472")	2.283"	0.354"
155479	1.732"	1.299"	16mm (0.630")	2.283"	0.472"

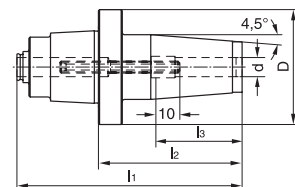


Weldon Toolholder DIN 1835 B

Part Number	l1	l2	l3	d(h5)	D
155419	2.559"	1.457"	0.945"	6mm	2.283"
155411	2.598"	1.614"	0.984"	8mm	2.283"
155400	2.756"	1.811"	1.142"	10mm	2.283"
155406	2.874"	1.929"	1.260"	12mm	2.283"
155412	2.874"	1.457"	1.260"	14mm	2.283"
155407	2.913"	1.614"	1.299"	16mm	2.283"
155427	3.071"	1.811"	1.457"	20mm	2.283"
121489	2.559"	1.457"	0.945"	1/4"	2.283"
121529	1.575"	1.614"	1.142"	3/8"	2.283"
121525	2.874"	1.811"	1.260"	1/2"	2.283"
121520	2.953"	1.929"	1.339"	5/8"	2.283"
121526	3.071"	2.008"	1.457"	3/4"	2.283"

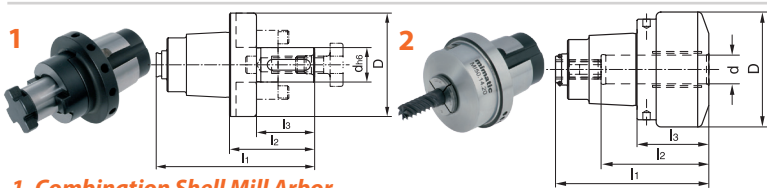
Whistle Notch Toolholder DIN 1835 E

Part Number	l1	l2	l3	d(h5)	D
155416	2.559"	1.417"	0.945"	6mm	2.283"
155401	2.598"	1.417"	0.984"	8mm	2.283"
155383	2.756"	1.575"	1.142"	10mm	2.283"
155408	2.874"	1.772"	1.260"	12mm	2.283"
155435	2.874"	1.772"	1.260"	14mm	2.283"
155436	2.972"	1.890"	1.358"	16mm	2.283"
155384	3.071"	1.969"	1.457"	20mm	2.283"
166816	2.559"	1.417"	0.945"	1/4"	2.283"
155440	2.756"	1.575"	1.142"	3/8"	2.283"
155434	2.874"	1.772"	1.260"	1/2"	2.283"
155428	2.953"	1.890"	1.339"	5/8"	2.283"
155385	3.071"	1.969"	1.457"	3/4"	2.283"



Shrink Fit Chuck

Part Number	l1	l2	l3	d	D
155421	3.976"	2.362"	1.417"	8mm (0.315")	2.283"
155409	3.976"	2.362"	1.654"	10mm (0.394")	2.283"
155444	4.137"	2.559"	1.850"	12mm (0.472")	2.283"
155438	4.137"	2.559"	1.850"	14mm (0.551")	2.283"
155430	4.370"	2.756"	1.969"	16mm (0.630")	2.283"
155431	4.567"	2.953"	1.969"	18mm (0.709")	2.283"
155454	4.567"	2.953"	2.047"	20mm (0.787")	2.283"

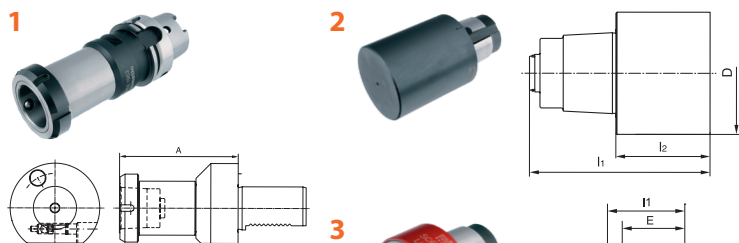


1. Combination Shell Mill Arbor

Part Number	l1	l2	l3	d(h6)	D
155447	3.228"	1.614"	1.063"	16mm (0.630")	2.283"
155413	3.465"	1.850"	1.220"	22mm (0.866")	2.283"
SM3/4	3.150"	1.496"	1.260"	0.750" (3/4")	2.283"

2. Hydraulic Chuck

Part Number	l1	l2	l3	d	D
155417	2.795"	2.047"	1.181"	20mm (0.787")	2.283"



1. Tool Presetting Unit

Part Number	VDI	A
155356	2.795"	110mm

2. Blank

Part Number	l1	l2	D
166789	4.370"	2.756"	2.283"

3. Softsynchro Chuck (Licence Emuge)

Part Number	Collet	Thread	l1	d	D
121530	ER-GB16	M4-M12	1.752"	0.177-0.394"	1.969"